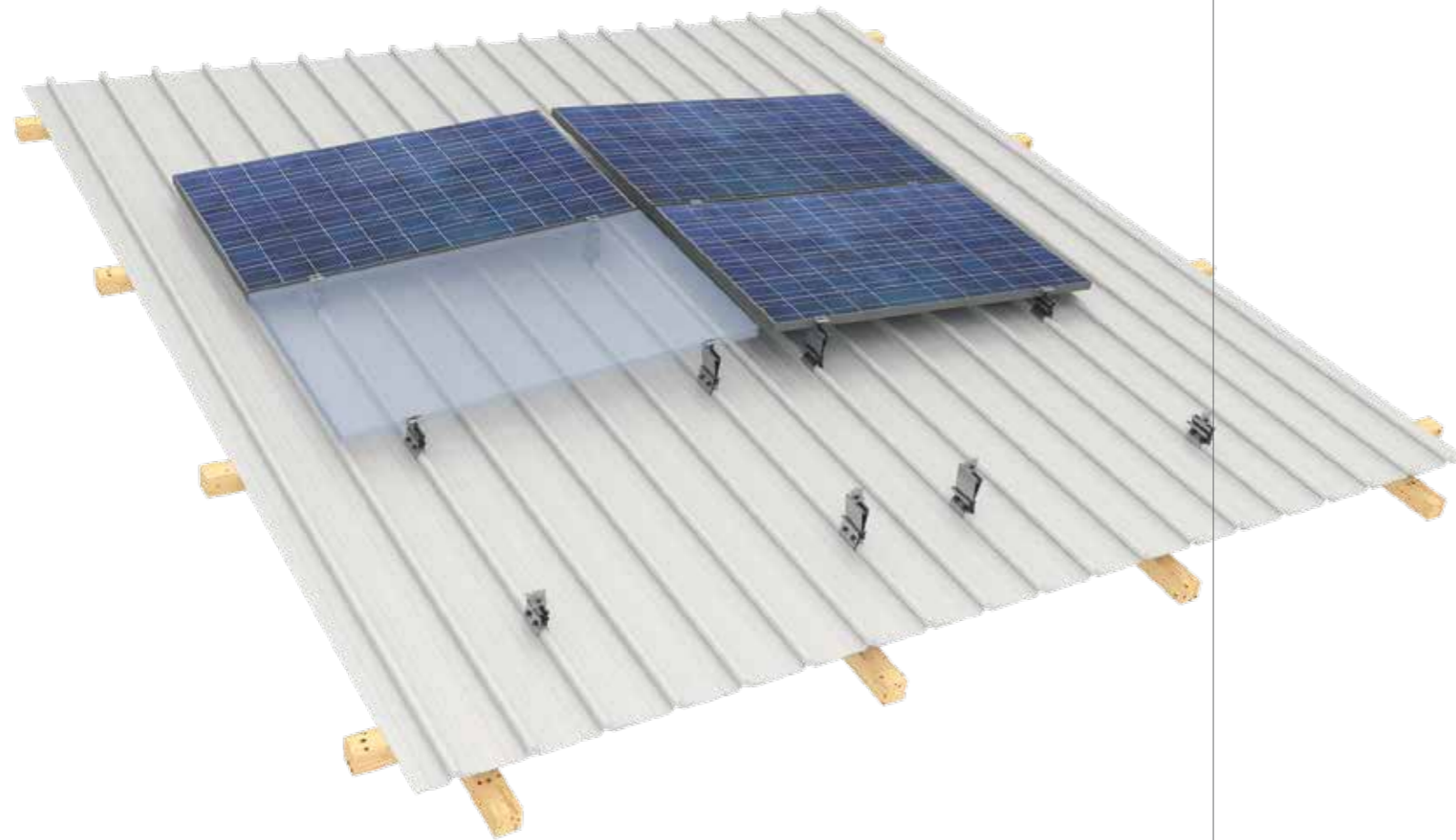


# TRAPEZOIDAL elevated, KLIP-LOK



## Technical details

- > **Grounded clamps**
- > **25 year limited product warranty**
- > **Made in Europe**
- > **Module orientation:** Landscape
- > **Rail length:** 100 mm
- > **Additional module Tilt:** 5°
- > **Module type:** Framed modules, 30–50 mm
- > **Wind-/Snowload:** According approval module manufacturer
- > **Max. row size:** 6 meter
- > **Material:** Supporting materials and clamps made of aluminum EN AW 6060 T64, stainless steel screws.

## < T+ KLIP-LOK >



## KLIP-LOK ELEVATED

The **NEW T+ KLIP-LOK** is an addition to the regular T+ system, specially designed for the use on KLIP-LOK metal roofs.

With the additional tilt of 5° you achieve a perfect self cleaning effect for the modules on low slope KLIP-LOK roofs.